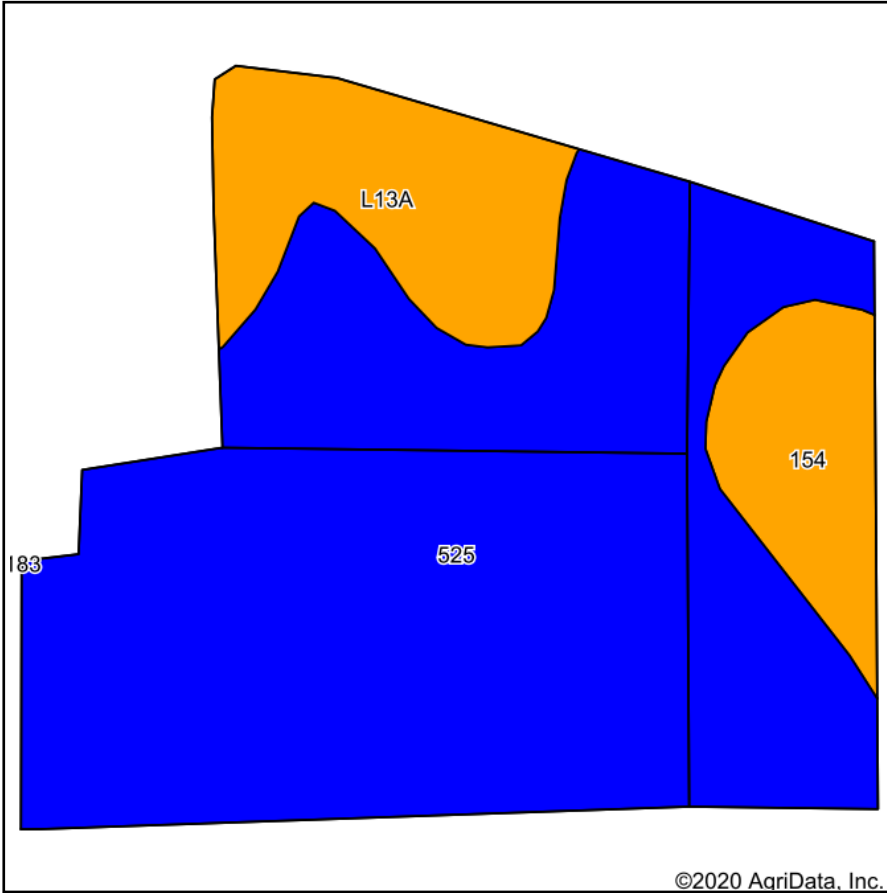
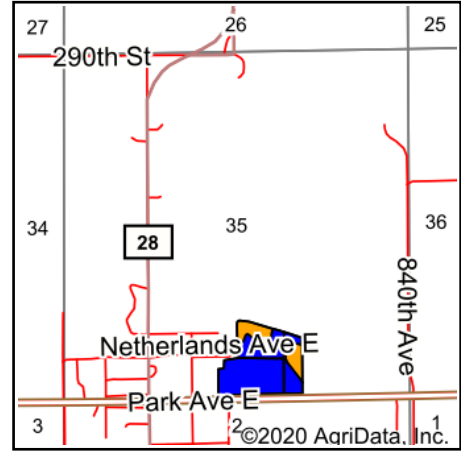


Soils Map



Soils data provided by USDA and NRCS.



State: **Minnesota**
 County: **Freeborn**
 Location: **35-104N-20W**
 Township: **Geneva**
 Acres: **26.28**
 Date: **8/24/2020**

LANDPROZ.COM
 Agricultural & Recreational Real Estate / Auctions / Farm Management

Maps Provided By:



Area Symbol: MN047. Soil Area Version: 16

Code	Soil Description	Acres	Percent of field	PI Legend	Non-Irr Class *c	Productivity Index	*n NCCPI Overall	*n NCCPI Corn	*n NCCPI Soybeans	
525	Muskego soils, 0 to 1 percent slopes	20.51	78.0%		IIIw	81	56	50	53	
L13A	Klossner muck, 0 to 1 percent slopes	3.52	13.4%		IIIw	77	83	77	83	
154	Blue Earth muck	2.25	8.6%		IIIw	77	76	65	76	
Weighted Average							80.1	*n 61.3	*n 54.9	*n 59

*n: The aggregation method is "Weighted Average using all components"

*c: Using Capabilities Class Dominant Condition Aggregation Method

Soils data provided by USDA and NRCS.