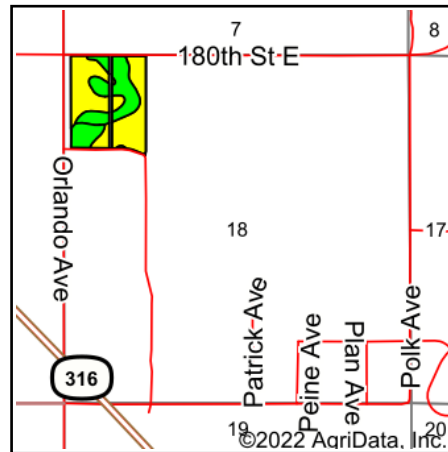


# Soils Map



Soils data provided by USDA and NRCS.



State: **Minnesota**  
 County: **Dakota**  
 Location: **18-114N-16W**  
 Township: **Ravenna**  
 Acres: **35.34**  
 Date: **12/29/2022**

Maps Provided By:  
  
 CUSTOMIZED ONLINE MAPPING  
 © AgriData, Inc. 2021 [www.AgriDataInc.com](http://www.AgriDataInc.com)



Area Symbol: MN037, Soil Area Version: 18

Code	Soil Description	Acres	Percent of field	PI Legend	Non-Irr Class *c	Irr Class *c	Productivity Index	*n NCCPI Overall	*n NCCPI Corn	*n NCCPI Soybeans
39A	Wadena loam, 0 to 2 percent slopes	21.55	61.0%		IIs		66	62	62	53
8A	Sparta loamy fine sand, 0 to 1 percent slopes	10.30	29.1%		IVs	Ile	39	57	57	31
8B	Sparta loamy fine sand, 1 to 6 percent slopes	3.49	9.9%		IVs	Ile	39	55	55	30
<b>Weighted Average</b>							<b>55.5</b>	<b>*n 59.9</b>	<b>*n 59.9</b>	<b>*n 44.3</b>

\*n: The aggregation method is "Weighted Average using all components"

\*c: Using Capabilities Class Dominant Condition Aggregation Method

\*- Irr Class weighted average cannot be calculated on the current soils data due to missing data.

Soils data provided by USDA and NRCS.