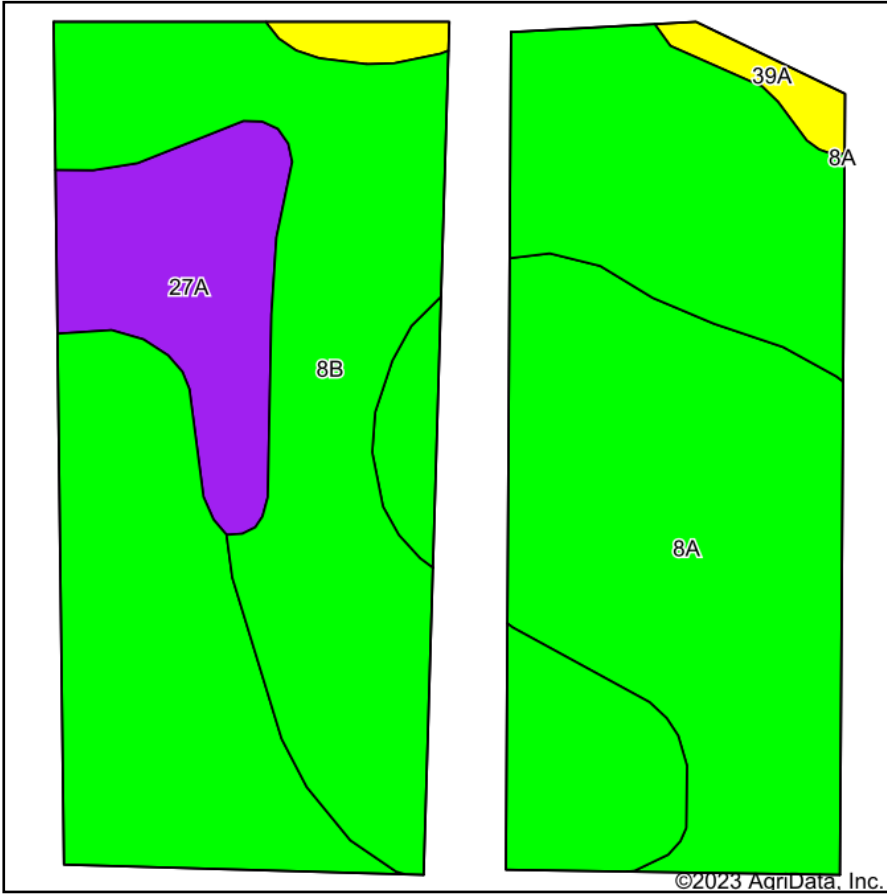
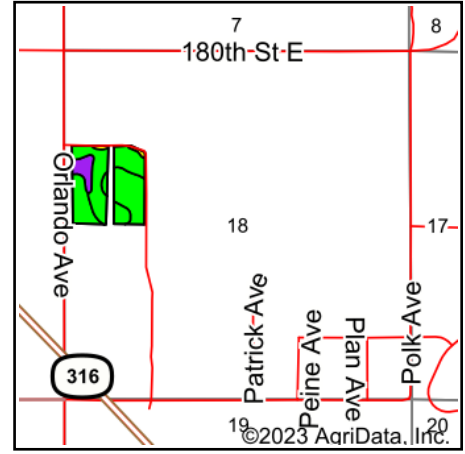


Soils Map



Soils data provided by USDA and NRCS.







State: **Minnesota**
 County: **Dakota**
 Location: **18-114N-16W**
 Township: **Ravenna**
 Acres: **26.73**
 Date: **1/13/2023**

Maps Provided By:

 CUSTOMIZED ONLINE MAPPING
 © AgriData, Inc. 2021 www.AgriDataInc.com



Area Symbol: MN037, Soil Area Version: 18

Code	Soil Description	Acres	Percent of field	PI Legend	Non-Irr Class *c	Irr Class *c	Productivity Index	*n NCCPI Overall	*n NCCPI Corn	*n NCCPI Soybeans
8A	Sparta loamy fine sand, 0 to 1 percent slopes	11.92	44.6%		IVs	Ile	39	57	57	31
8B	Sparta loamy fine sand, 1 to 6 percent slopes	11.66	43.6%		IVs	Ile	39	55	55	30
27A	Dickinson sandy loam, 0 to 2 percent slopes	2.52	9.4%		IIIIs		60	69	69	43
39A	Wadena loam, 0 to 2 percent slopes	0.63	2.4%		IIs		66	62	62	53
Weighted Average					3.86	*-	41.6	*n 57.4	*n 57.4	*n 32.2

*n: The aggregation method is "Weighted Average using all components"

*c: Using Capabilities Class Dominant Condition Aggregation Method

*-: Irr Class weighted average cannot be calculated on the current soils data due to missing data.

Soils data provided by USDA and NRCS.