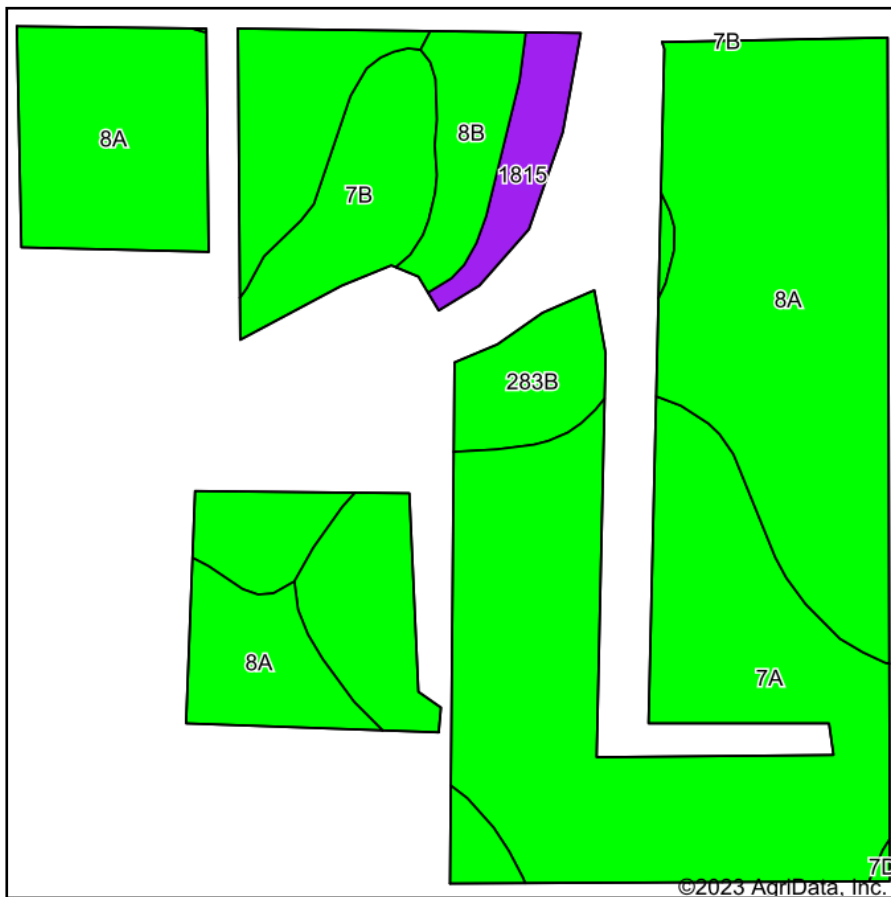
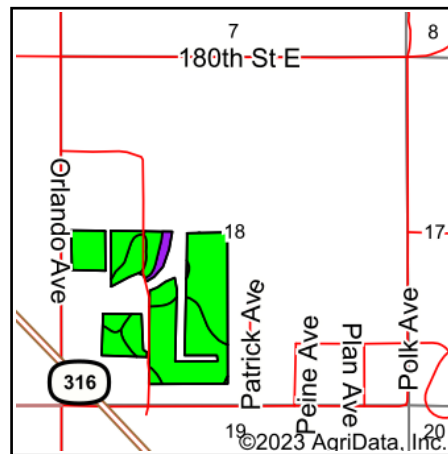


Soils Map



Soils data provided by USDA and NRCS.



State: **Minnesota**
 County: **Dakota**
 Location: **18-114N-16W**
 Township: **Ravenna**
 Acres: **77.14**
 Date: **1/13/2023**



Area Symbol: MN037, Soil Area Version: 18

Code	Soil Description	Acres	Percent of field	PI Legend	Non-Irr Class *c	Irr Class *c	Productivity Index	*n NCCPI Overall	*n NCCPI Corn	*n NCCPI Soybeans
8A	Sparta loamy fine sand, 0 to 1 percent slopes	34.04	44.1%		IVs	Ile	39	57	57	31
7A	Hubbard loamy sand, 0 to 1 percent slopes	28.18	36.5%		IVs	IVs	38	29	29	29
283B	Plainfield loamy sand, 2 to 6 percent slopes	5.02	6.5%		IVs	IIIe	32	20	17	16
7B	Hubbard loamy sand, 1 to 6 percent slopes	4.64	6.0%		IVs	IVs	36	29	29	28
8B	Sparta loamy fine sand, 1 to 6 percent slopes	2.96	3.8%		IVs	Ile	39	55	55	30
1815	Zumbro loamy fine sand	2.22	2.9%		IIIs		58	37	37	36
7D	Hubbard loamy sand, 12 to 18 percent slopes	0.08	0.1%		VII s		27	23	23	23
Weighted Average					3.97	*-	38.5	*n 42	*n 41.8	*n 29.2

*n: The aggregation method is "Weighted Average using all components"

*c: Using Capabilities Class Dominant Condition Aggregation Method

*- Irr Class weighted average cannot be calculated on the current soils data due to missing data.

Soils data provided by USDA and NRCS.