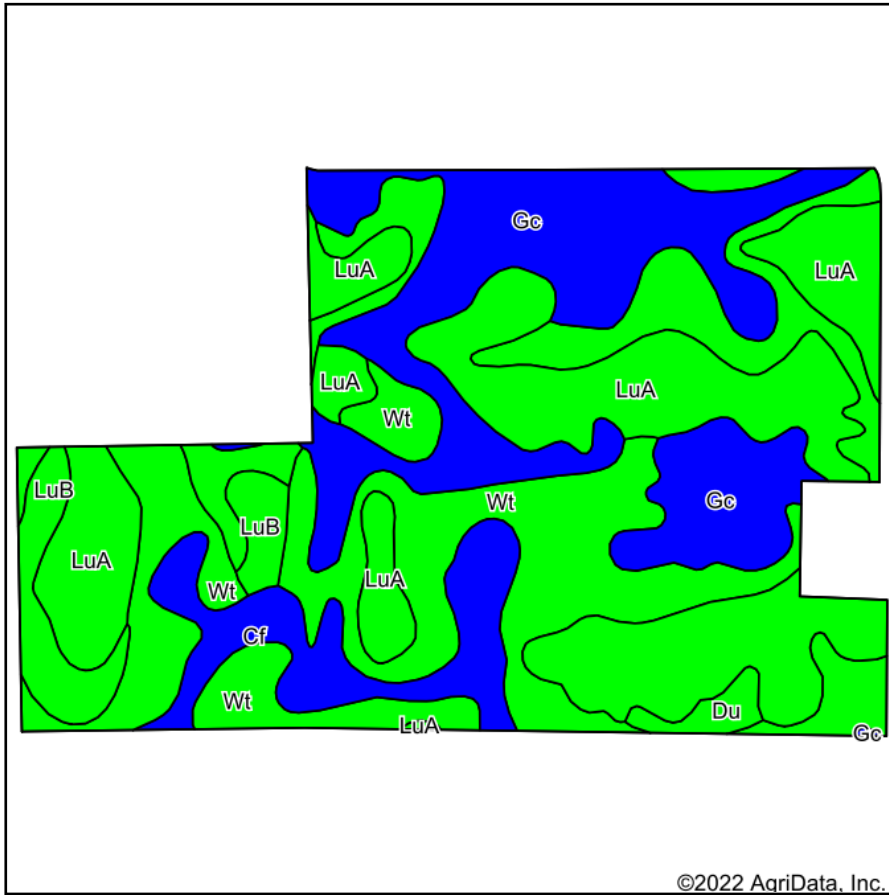
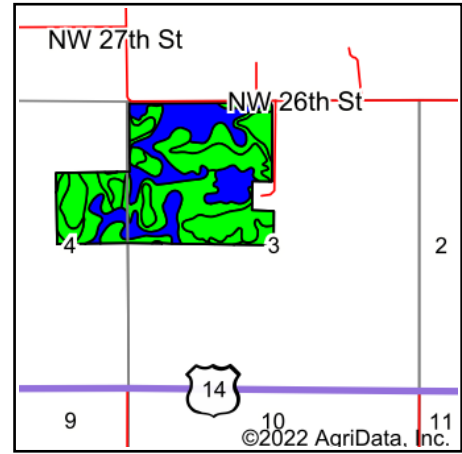


# Soils Map



Soils data provided by USDA and NRCS.



State: **Minnesota**  
 County: **Steele**  
 Location: **3-107N-21W**  
 Township: **Meriden**  
 Acres: **187.52**  
 Date: **12/19/2022**

Maps Provided By:  
  
 CUSTOMIZED ONLINE MAPPING  
 © AgriData, Inc. 2021 www.AgriDataInc.com



Area Symbol: MN147, Soil Area Version: 18

Code	Soil Description	Acres	Percent of field	PI Legend	Non-Irr Class *c	Productivity Index	*n NCCPI Overall	*n NCCPI Corn	*n NCCPI Soybeans	
Wt	Webster clay loam, 0 to 2 percent slopes	62.56	33.4%		IIw	93	82	78	82	
LuA	Le Sueur loam, 1 to 3 percent slopes	58.12	31.0%		Iw	97	90	90	84	
Gc	Glencoe clay loam, 0 to 1 percent slopes	43.06	23.0%		IIIw	86	77	76	76	
Cf	Canisteo clay loam, depressional, 0 to 1 percent slopes	13.77	7.3%		IIIw	86	75	67	75	
LuB	Le Sueur clay loam, 2 to 4 percent slopes	8.08	4.3%		Iw	98	91	91	83	
Du	Dundas silt loam, 0 to 2 percent slopes	1.93	1.0%		IIw	91	88	86	87	
<b>Weighted Average</b>						<b>1.95</b>	<b>92.3</b>	<b>*n 83.3</b>	<b>*n 81.1</b>	<b>*n 80.8</b>

\*n: The aggregation method is "Weighted Average using all components"

\*c: Using Capabilities Class Dominant Condition Aggregation Method

Soils data provided by USDA and NRCS.