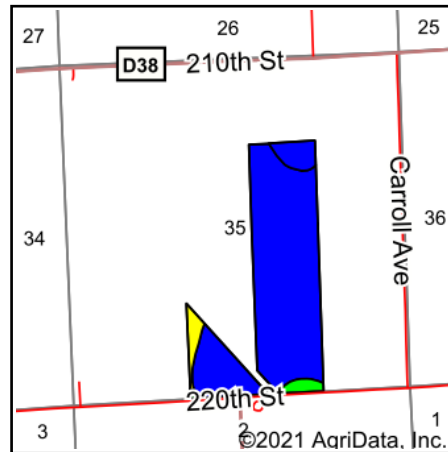
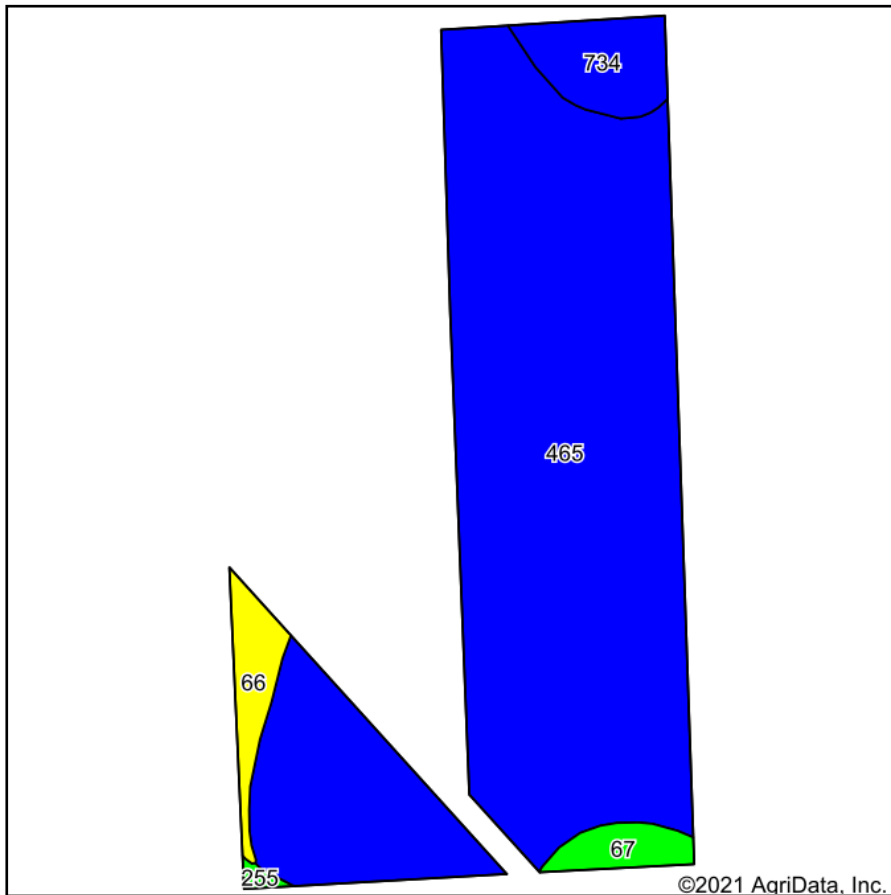


Soils Map



State: **Iowa**
 County: **Woodbury**
 Location: **35-88N-47W**
 Township: **Woodbury**
 Acres: **112.97**
 Date: **9/17/2021**






LANDPROZ.COM
 Agricultural & Recreational Real Estate / Auctions / Farm Management

Maps Provided By:

 CUSTOMIZED ONLINE MAPPING
 © AgriData, Inc. 2021 www.AgriDataInc.com



Area Symbol: IA193, Soil Area Version: 30

Code	Soil Description	Acres	Percent of field	CSR2 Legend	Non-Irr Class *c	CSR2**	CSR
465	Tieville silty clay, 0 to 2 percent slopes, rarely flooded	100.29	88.8%		IIIw	63	33
734	Holly Springs silty clay loam, 0 to 2 percent slopes, rarely flooded	5.82	5.2%		IIw	68	56
66	Luton silty clay, 0 to 2 percent slopes, rarely flooded	3.78	3.3%		IIIw	59	37
67	Woodbury silty clay, 0 to 2 percent slopes, rarely flooded	2.70	2.4%		IIIw	74	51
255	Cooper silty clay loam, 0 to 2 percent slopes, rarely flooded	0.38	0.3%		IIw	86	65
Weighted Average						63.5	34.9

**IA has updated the CSR values for each county to CSR2.

*c: Using Capabilities Class Dominant Condition Aggregation Method
 Soils data provided by USDA and NRCS.