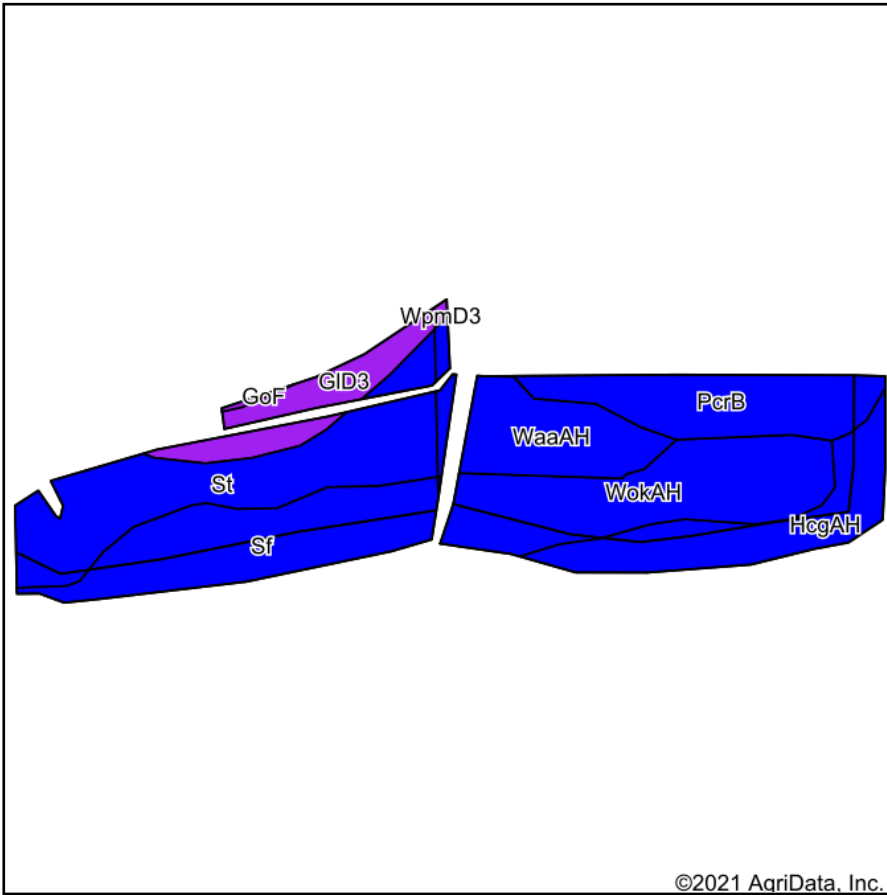
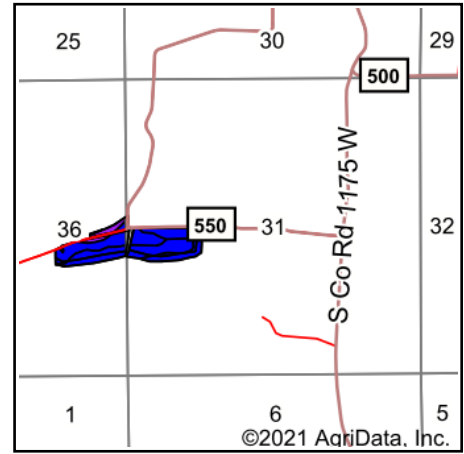


Soils Map



Soils data provided by USDA and NRCS.

©2021 AgriData, Inc.



State: **Indiana**
 County: **Orange**
 Location: **31-1N-2W**
 Township: **Jackson**
 Acres: **30.77**
 Date: **1/14/2021**

LANDPROZ.COM
 Agricultural & Recreational Real Estate / Auctions / Farm Management

Maps Provided By:



© AgriData, Inc. 2021

www.AgriDataInc.com



Code	Soil Description	Acres	Percent of field	Non-Irr Class Legend	Non-Irr Class *c	Corn	Grass legume hay	Pasture	Soybeans	Winter wheat	*n NCCPI Overall	*n NCCPI Corn	*n NCCPI Small Grains	*n NCCPI Soybeans	*n NCCPI Cotton
St	Stendal silt loam, frequently flooded	6.68	21.7%		Ilw	125			40		85	79	72	85	59
WokAH	Wilbur silt loam, 0 to 2 percent slopes, frequently flooded, brief duration	5.90	19.2%		Ilw	125			43		94	94	75	84	64
Sf	Steff silt loam, 0 to 2 percent slopes, frequently flooded	5.25	17.1%		Ilw	116			40		79	79	73	73	75
PcrB	Pekin silt loam, 2 to 6 percent slopes	3.74	12.2%		Ile	131	4	7	46	52	68	62	68	52	26
HcgAH	Haymond silt loam, 0 to 2 percent slopes, frequently flooded, brief duration	3.67	11.9%		Ilw	120			42		94	94	52	78	70
WaaAH	Wakeland silt loam, 0 to 2 percent slopes, frequently flooded, brief duration	3.39	11.0%		Ilw	130			39		91	91	40	73	55
GID3	Gilpin silt loam, 12 to 18 percent slopes, severely eroded	2.14	7.0%		Vle	70	2	5	25	35	38	38	33	20	16

Maps Provided By:



© AgriData, Inc. 2021

www.AgriDataInc.com

Weighted Average	120.3	0.6	1.2	40.4	8.8	*n 82.1	*n 80.1	*n 63.6	*n 72.1	*n 56.6
-------------------------	--------------	------------	------------	-------------	------------	----------------	----------------	----------------	----------------	----------------

*n: The aggregation method is "Weighted Average using all components"

*c: Using Capabilities Class Dominant Condition Aggregation Method

Soils data provided by USDA and NRCS.