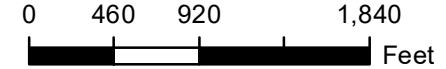


Map Created June 19, 2018



Unless otherwise noted:
 Shares are 100% operator
 Crops are non-irrigated
 Corn = yellow for grain
 Soybeans = common soybeans for grain
 Wheat = HRS, HRW = Grain
 Sunflower = Oil, Non-Oil = Grain
 Oats and Barley = Spring for grain
 Rye = for grain
 Peas = process
 Alfalfa, Mixed Forage AGM, GMA, IGS = for forage
 Beans = Dry Edible
 NAG = for GZ
 Canola = Spring for seed

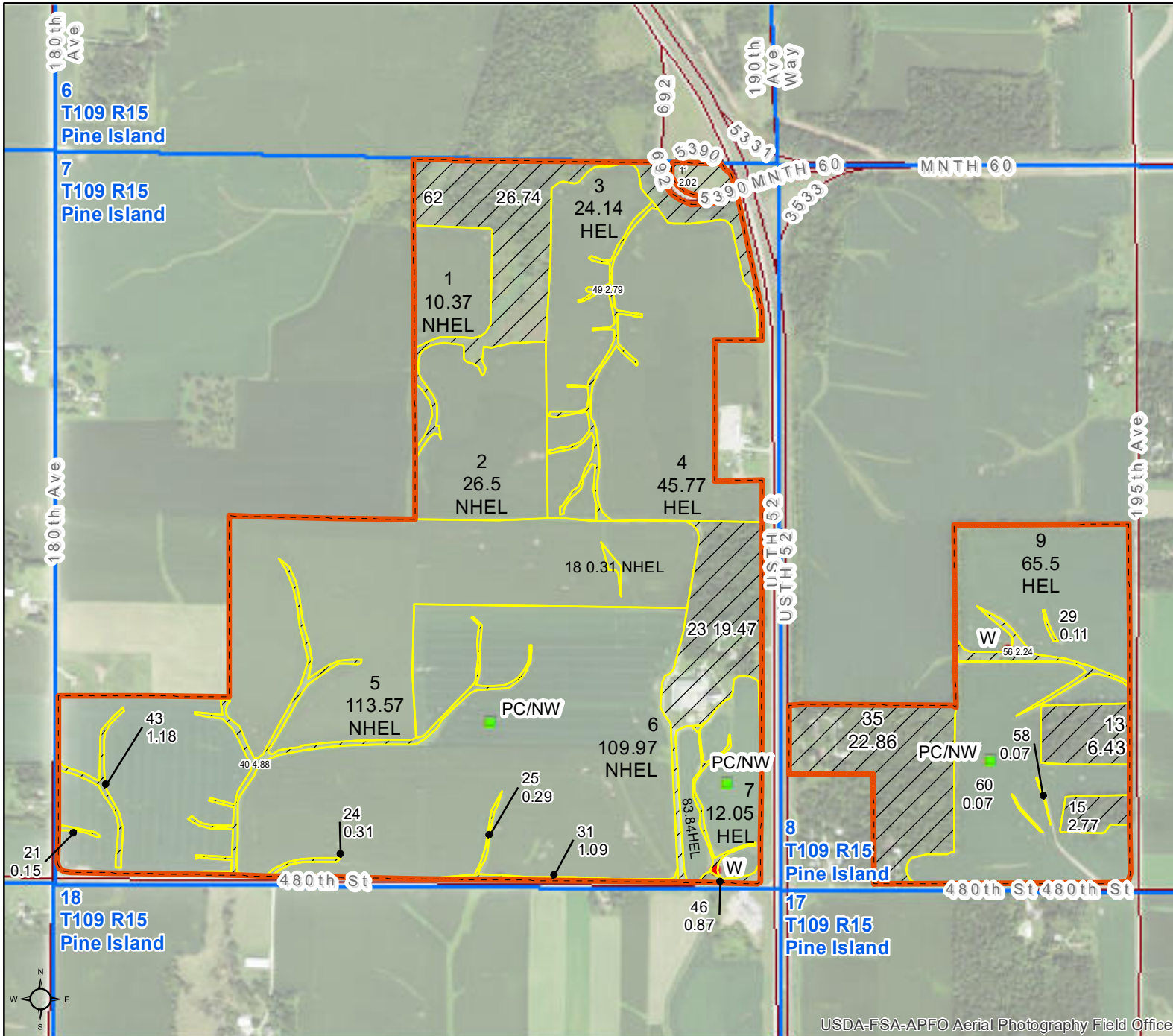
Common Land Unit

- Non_Cropland
- Cropland
- Tract Boundary

Wetland Determination Identifiers

- Restricted Use
- Limited Restrictions
- Exempt from Conservation
- Compliance Provisions

Tract Cropland Total: 412.02 acres



USDA-FSA-APFO Aerial Photography Field Office

United States Department of Agriculture (USDA) Farm Service Agency (FSA) maps are for FSA Program administration only. This map does not represent a legal survey or reflect actual ownership; rather it depicts the information provided from the producer and/or National Agricultural Imagery Program (NAIP) imagery. The producer accepts the data 'as is' and assumes all risks associated with its use. USDA-FSA assumes no responsibility for actual or consequential damage incurred as a result of any user's reliance on this data outside FSA Programs. Wetland identifiers do not represent the size, shape, or specific determination of the area. Refer to your original determination (CPA-026 and attached maps) for boundaries and determinations or contact USDA Natural Resources Conservation Service (NRCS). This map displays the 2017 NAIP Imagery.

Minnesota

U.S. Department of Agriculture

FARM: 8458

Goodhue

Farm Service Agency

Prepared: 3/11/19 7:49 AM

Report ID: FSA-156EZ

Abbreviated 156 Farm Record

Crop Year: 2019

Page: 1 of 1

DISCLAIMER: This is data extracted from the web farm database. Because of potential messaging failures in MIDAS, this data is not guaranteed to be an accurate and complete representation of data contained in the MIDAS system, which is the system of record for Farm Records.

Operator Name: SCHLIEP, DONALD Farm Identifier: Recon Number:

Farms Associated with Operator: 8124, 8125

CRP Contract Number(s): None

Table with 9 columns: Farmland, Cropland, DCP Cropland, WBP, WRP/EWP, CRP Cropland, GRP, Farm Status, Number of Tracts. Values include 506.36, 412.02, 412.02, 0.0, 0.0, 0.0, 0.0, Active, 1.

Table with 4 columns: ARC-IC NONE, ARC-CO CORN, SOYBN, ARC/PLC, PLC NONE, PLC-Default NONE.

Table with 5 columns: Crop, Base Acreage, CTAP Tran Yield, PLC Yield, CCC-505 CRP Reduction. Values include CORN (175.15, 175, 0.0) and SOYBEANS (149.69, 45, 0.0).

Tract Number: 4709 Description: SEC7,8,PINEISLAND;

BIA Range Unit Number:

HEL Status: HEL: conservation system is being actively applied

Wetland Status: Tract contains a wetland or farmed wetland

WL Violations: None

Table with 7 columns: Farmland, Cropland, DCP Cropland, WBP, WRP/EWP, CRP Cropland, GRP. Values include 506.36, 412.02, 412.02, 0.0, 0.0, 0.0, 0.0.

Table with 5 columns: Crop, Base Acreage, CTAP Tran Yield, PLC Yield, CCC-505 CRP Reduction. Values include CORN (175.15, 175, 0.0) and SOYBEANS (149.69, 45, 0.0).

Owners: KHAM PROPERTIES LLP

Other Producers: None